

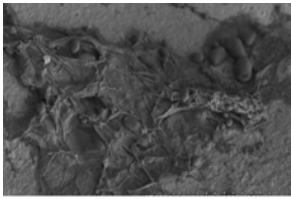
Images of RS16 (Potato-scraping) residues

using Hitachi S3500N VP-SEM

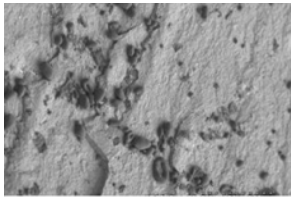
The key to the images is at the beginning of the document.

The images published in this pdf are those that were used in the training portion of the experiment reported in Monnier et al. 2012, *J. Arch. Sci.* For questions, please contact Gilliane Monnier at monni003@umn.edu.

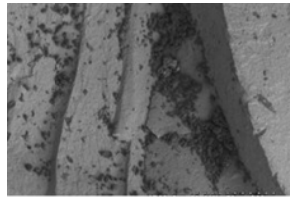
Naming conventions: 'RS' = Residue Study; 'D' = Dorsal side; 'V' = Ventral side; 'a', 'b', etc. = residue label; '25', '50', '115' = magnification used



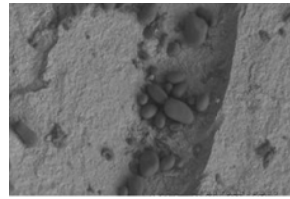
RS16D_e01.TIF



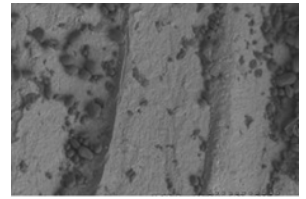
RS16D_e02.TIF



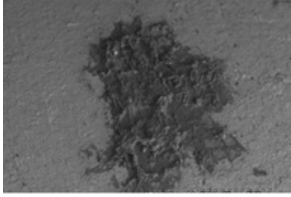
RS16D_e03.TIF



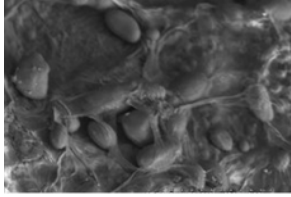
RS16D_e04.TIF



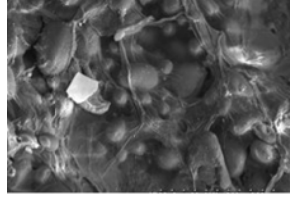
RS16D_e05.TIF



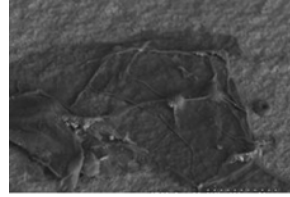
RS16D_g01.TIF



RS16D_g03.TIF



RS16D_g04.TIF



RS16D_gnear.TIF

